

**TANCO AUTOWRAP
300 MODEL (1994)
OPERATORS HANDBOOK
AND
PARTS LIST
WD65-300-M0594**

**TANCO AUTOWRAP CONSTANT INDEXING
PRIMARY CHAIN DRIVE TENSIONING SYSTEM**

CHAIN TENSIONING PROCEDURE

1. LOOSEN M10 BOLT SECURING BELT TENSIONER.
2. TENSION BELT BY ADJUSTING TENSIONER USING SPANNER IN DIRECTION OF ARROW "X" UNTIL SETTING OF 15-20 IS REACHED.
3. RE-TIGHTEN M10 BOLT TO SECURE TENSIONER IN POSITION.

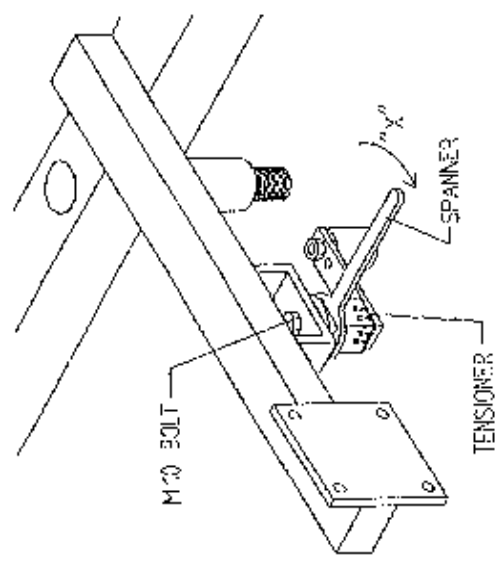
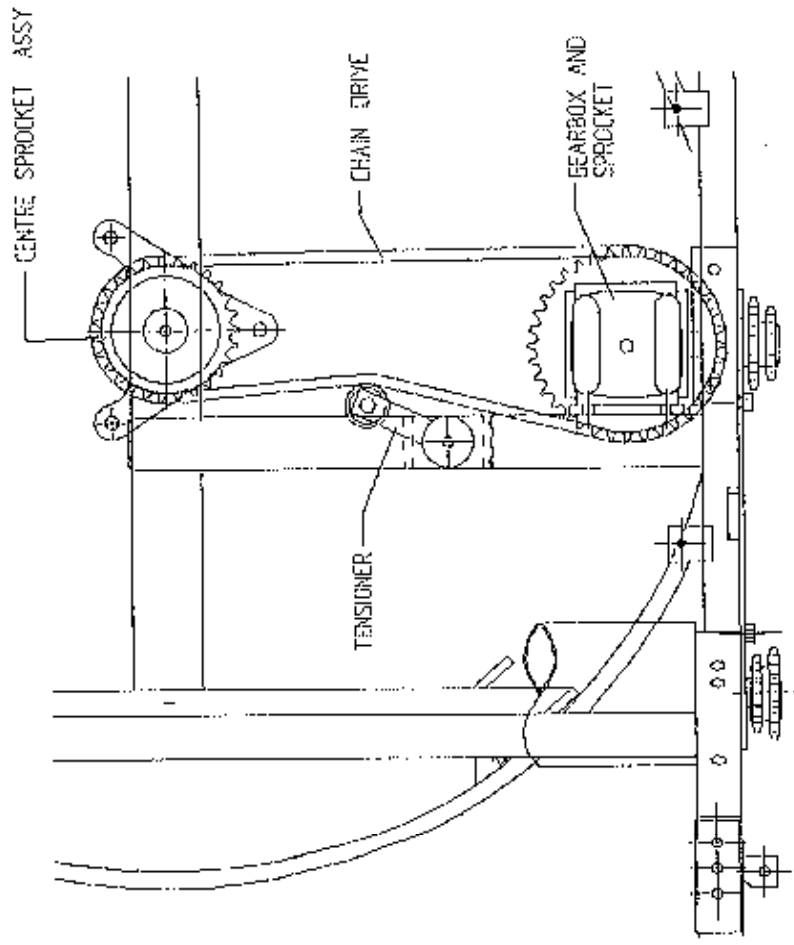


Fig. 2

TANCO AUTOWRAP 1994 DRIVE BELT TENSIONING SYSTEM

BELT TENSIONING PROCEDURE

1. CHECK THAT HYDRAULIC MOTOR MOUNTING BRACKET IS SECURE IN POSITION
2. LOOSEN M10 BOLT WHICH CLAMPS BELT TENSIONER BODY TO MOTOR MOUNT.
3. TENSION BELT BY ADJUSTING TENSIONER USING SPANNER IN DIRECTION OF ARROW "X" UNTIL SETTING OF 30 IS REACHED
4. RE-TIGHTEN M10 BOLT TO SECURE TENSIONER IN POSITION.

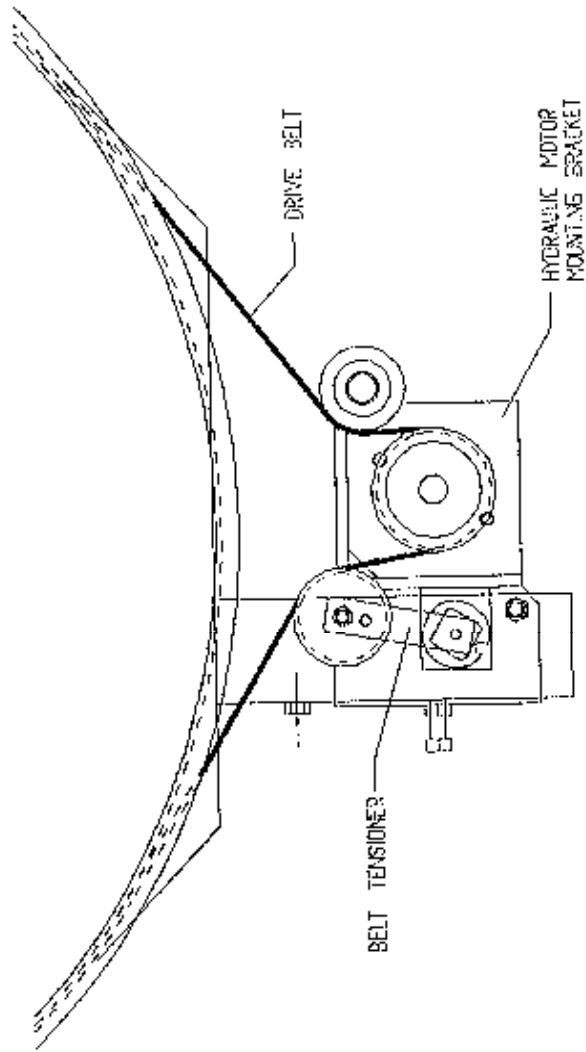
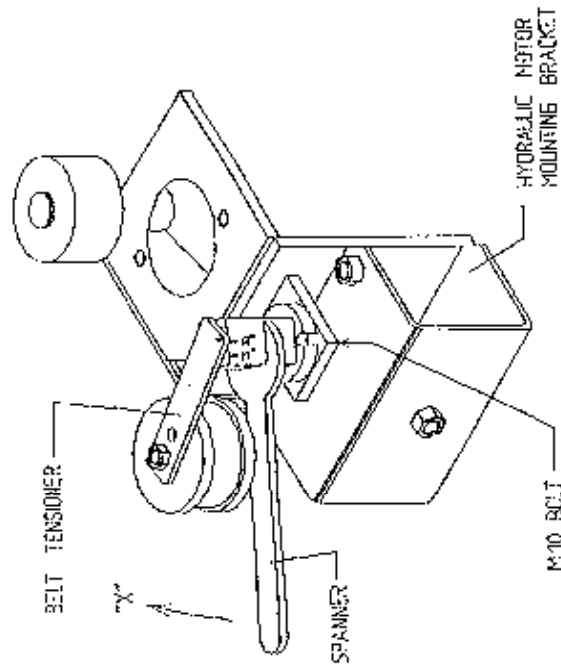
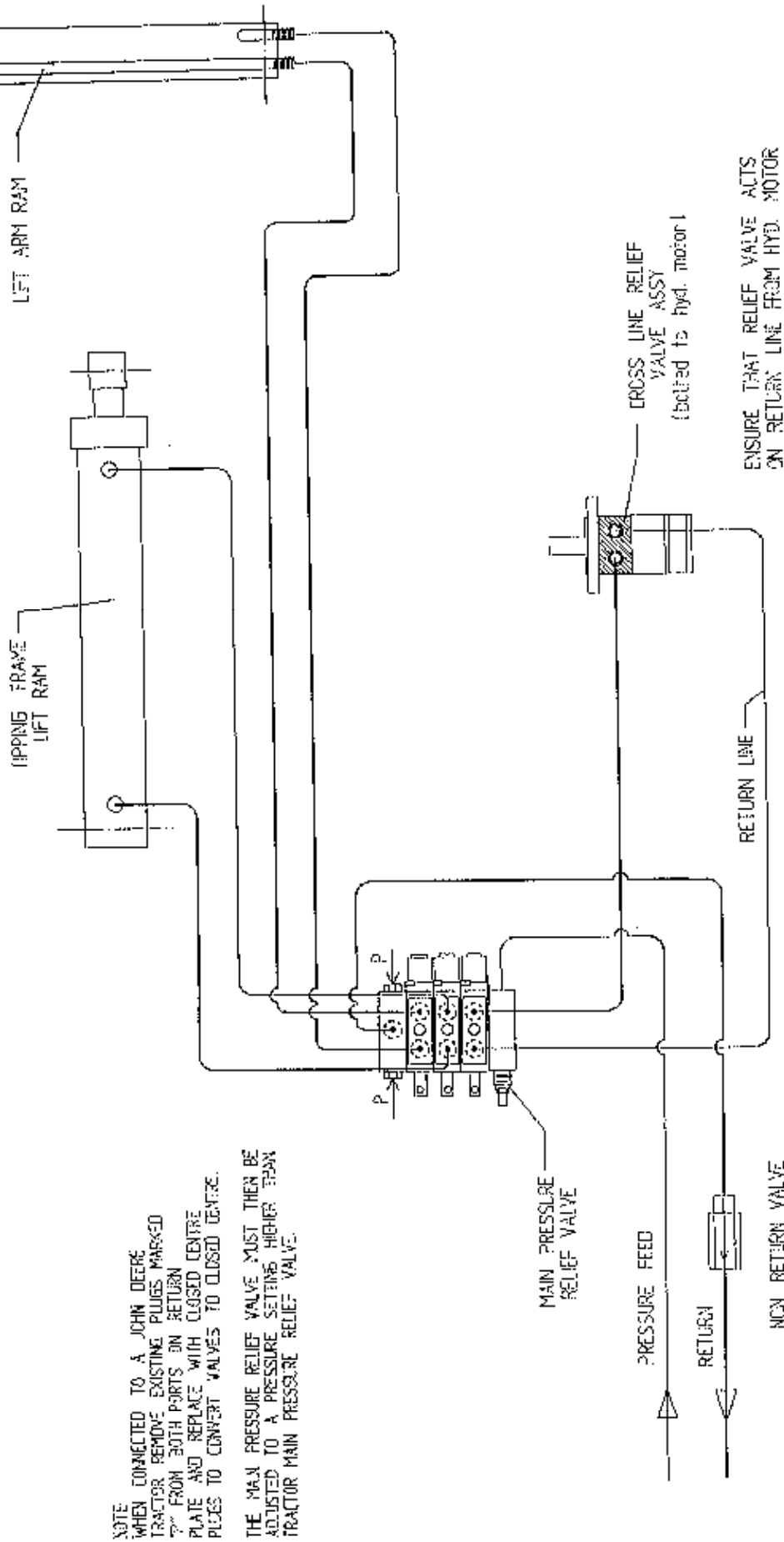


Fig. 3

TANCO AUTOWRAP 300 MODEL (TRAILED) 1994 HYDRAULIC CIRCUIT DIAGRAM

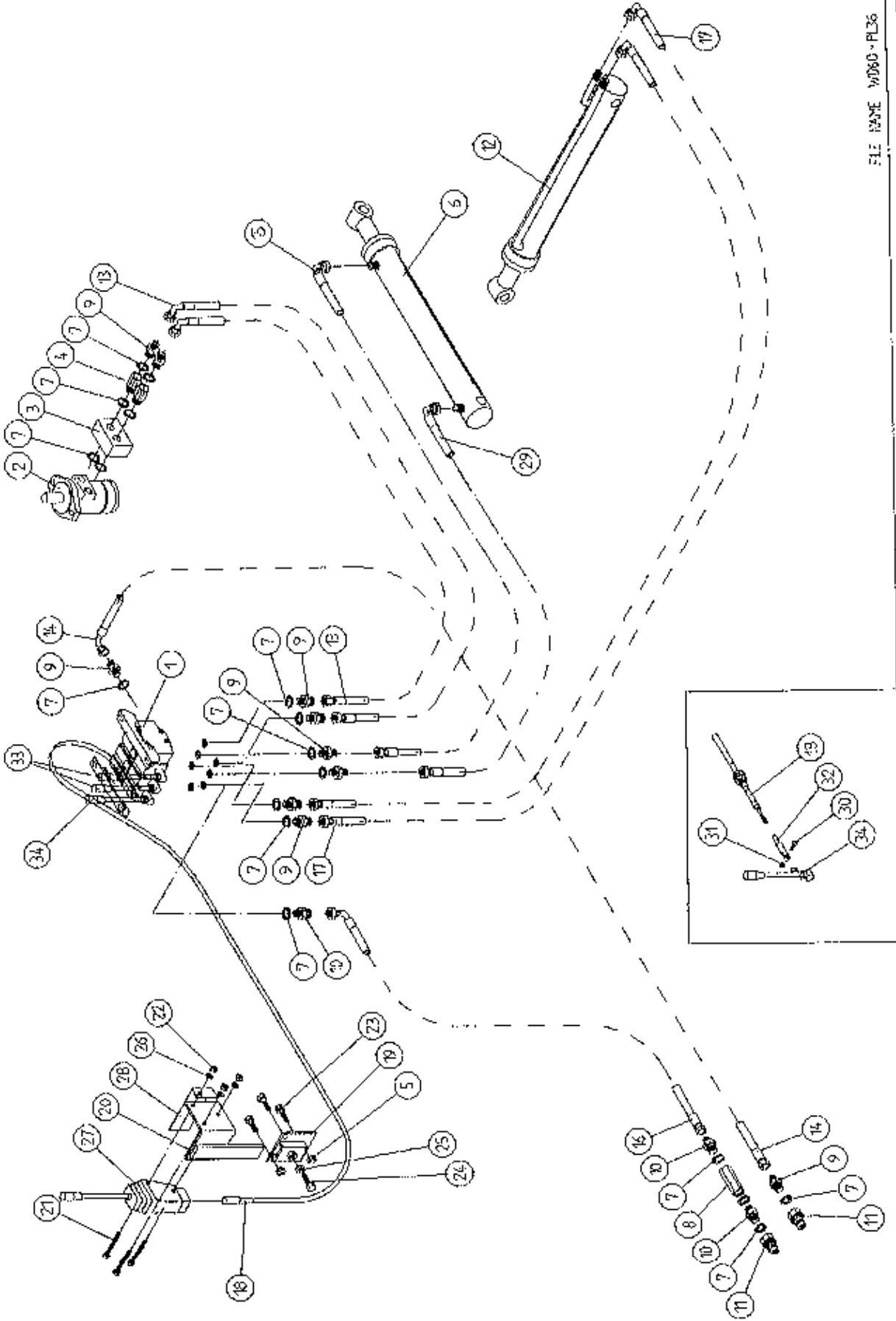


NOTE
WHEN CONNECTED TO A JOHN DEERE
TRACTOR REMOVE EXISTING PLUGS MARKED
"P" FROM BOTH PORTS ON RETURN
PLATE AND REPLACE WITH CLOSED CENTRE
PLUGS TO CONVERT VALVES TO CLOSED CENTRE.

THE MAIN PRESSURE RELIEF VALVE MUST THEN BE
ADJUSTED TO A PRESSURE SETTINGS HIGHER THAN
TRACTOR MAIN PRESSURE RELIEF VALVE.

ENSURE THAT RELIEF VALVE ACTS
ON RETURN LINE FROM HYD. MOTOR

TANCO AUTOWRAP 300 TRAILED MODEL 1994
HYDRAULIC COMPONENTS

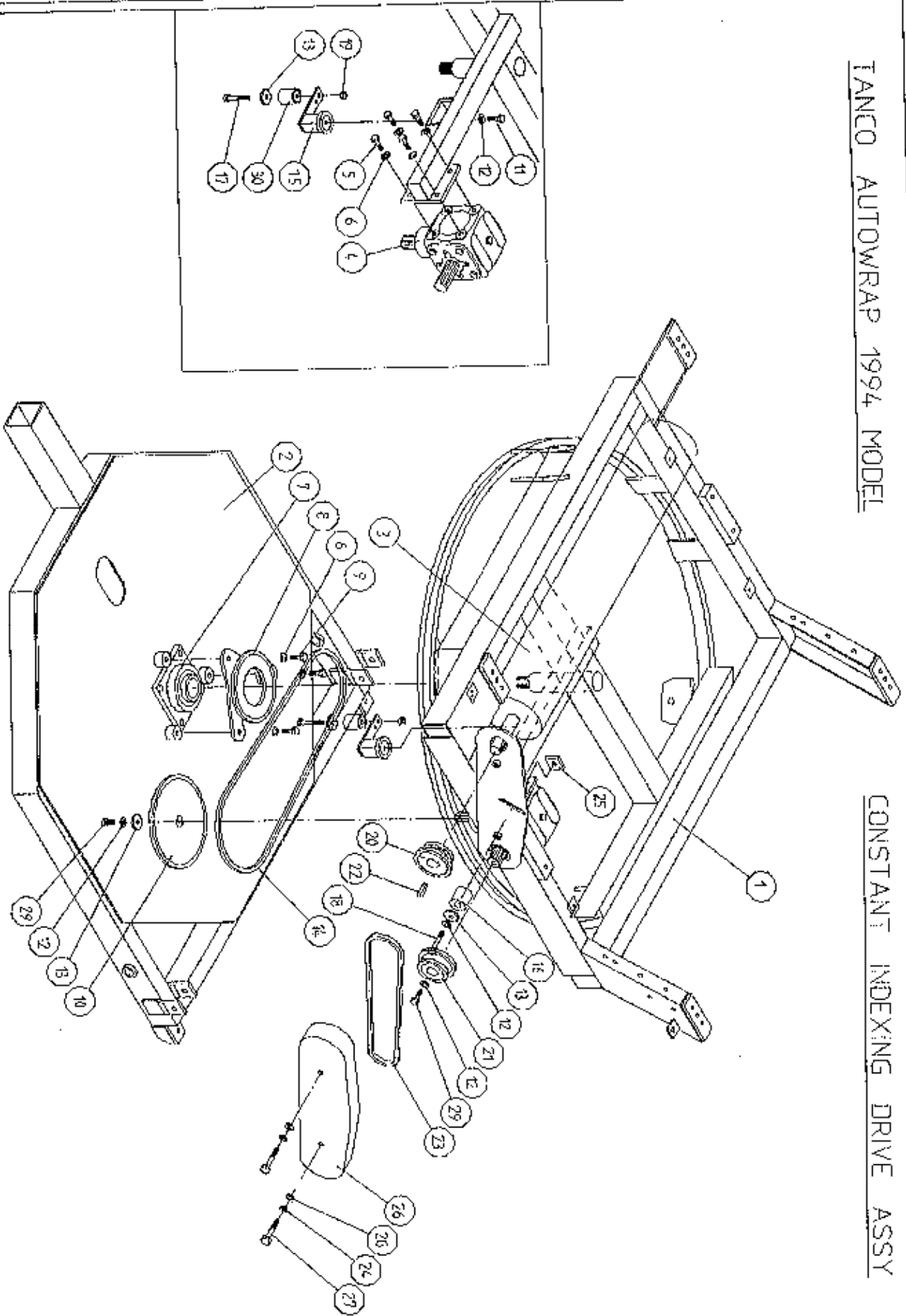


**TANCO AUTOWRAP 300 MODEL (TRAILED) 1994
HYDRAULIC COMPONENTS (DIN)
PARTS LIST**

ITEM NO.	DESCRIPTION	QTY.	PART-NO.
1.	3 BANK SPOOL VALVE (DIN)	1	Z01-03-018D
2	HYDRAULIC MOTOR (C.L.)	1	Z01-02-AR75
3	CROSS LINE RELIEF VALVE	1	Z01-03-002
4	1/2" BSP BOTTOM BANJO BOLT (SPECIAL)	2	Z01-03-002B
5	M10 LOCKNUT	3	Z23-10
6	HYD. RAM (FOR TIPPING FRAME)	1	Z01-01-AR687
7	1/2" DOWTY WASHER	18	Z01-04-03
8	1/2" NON RETURN VALVE	1	Z01-03-017
9	1/2" X 3/8" ADAPTOR	10	Z01-06-06-08
10	1/2" X 1/2" ADAPTOR	3	Z01-06-08-08
11	1/2" MALE END Q/R COUPLING	2	Z01-15-081
12	HYD. RAM (FOR LIFT ARM)	1	Z01-01-AW
13	96" ST/90 3/8" D/W HOSE	2	Z38-R2-96-S9
14	84" ST/90 3/8" D/W HOSE	1	Z38-R2-84-S9
15	72" ST/90 3/8" D/W HOSE	1	Z38-R2-72-S9
16	84" ST/90 1/2" S/W HOSE	1	Z12-R1-84-S9
17	108" ST/90 3/8" D/W HOSE	2	Z38-R2-108S9
18	3 1/2" METER ACTUATOR CABLES C/W BULKHEAD END	1	Z004-03-0061 Z004-03-009
19	ACTUATOR MTG. BRACKET (LOWER)	1	WD65-AML
20	ACTUATOR MTG. BRACKET (UPPER)	1	WD65-AMLI
21	M8 HEX HD BOLT x 65 mm LONG	3	Z26-048B
22	M8 HEX NUT	3	Z18-08
23	M10 HEX HD. SETS X 40mm LONG	3	Z26-064S
24	M12 HEX HD. SET X 40mm LONG	1	Z26-084S
25	M12 HEX NUT	1	Z18-12
26	8MM DIA SPRING WASHER	3	Z12-02-08
27	ACTUATOR LEVER	3	Z004-03-009
28	STICKER MOUNTING PLATE	1	WD60-794
29	60" ST/90 3/8" HOSE	1	Z38-R2-60-S9
30	M6 HEX HD. SET x 20mm LONG	1	Z26-020S
31	M6 LOCKNUT	1	Z23-06
32	CLEVIS	1	Z004-03-006C
33	LEVER ASSEMBLY	3	WD60-VL

TANCO AUTOWRAP 1994 MODEL

CONSTANT INDEXING DRIVE ASSY



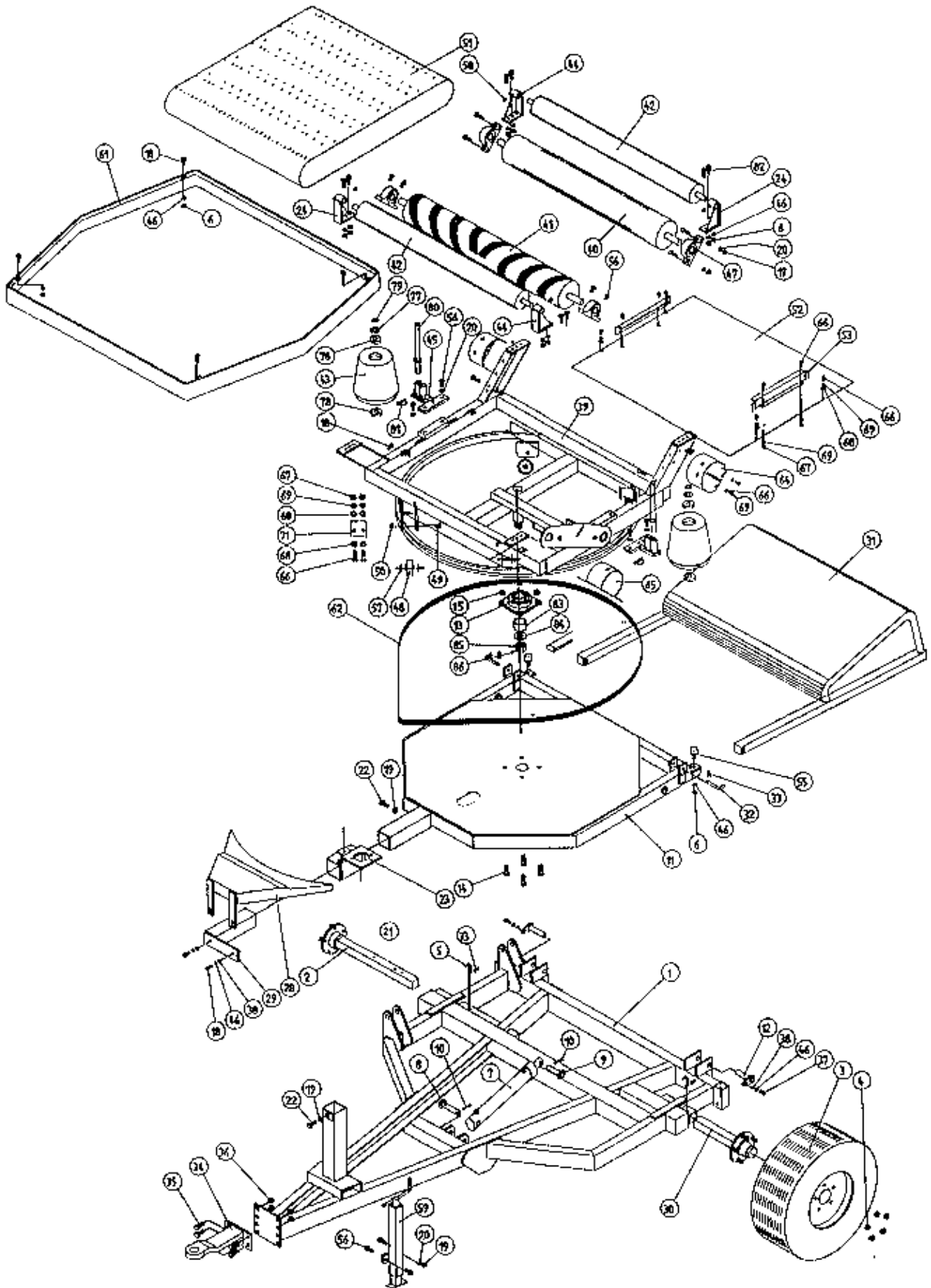
FILE NAME W060 - P14

TANCO AUTOWRAP
CONSTANT INDEXING DRIVE ASSEMBLY

PARTS LIST

ITEM NO.	DESCRIPTION	QTY.	PART-NO
1	TURNTABLE ASSY.	1	WD60-TAC
2	TIPPING FRAME ASSY.	1	WD60-TFC
3	DRIVE ROLLER ASSY.	1	WD65-BRD
4	GEAR BOX	1	Z01-25-300
5	M12 HEX HD SET x 30mm LONG	4	Z26-082S
5	12mm DIA SPRING WASHER	7	Z12-02-12
7	2" DIA FLANGE BEARING	1	Z06-49EC
8	CENTRE SPROCKET ASSY 27 TOOTH	1	WD60-CSA
9	M12 HEX HD SET x 25mm LONG	3	Z26-081S
10	36 TOOTH SPROCKET	1	Z06-D65-36S
11	M10 HEX HD SET x 25mm LONG	1	Z26-0611S
12	10mm DIA SPRING WASHER	4	Z12-02-10
13	RETAINING COLLAR	3	WD623-071
14	CHAIN 3/4" PITCH X 87 PITCHES	1	Z09-AW-4
15	ROSTA TENSIONING UNIT ARM	1	Z06-454
16	CHAIN TENSIONER	1	WD65-CT
17	M10 HEX HD BOLT x 65MM LONG	1	Z26-0671B
18	M10 HEX HD BOLT x 80MM LONG	1	Z26-0691B
19	M10 LOCKNUT	1	Z23-10
20	SPROCKET DOUBLE SIMPLEX 13T/16T KEYED	1	Z06-D65-1316K
21	SPROCKET DOUBLE SIMPLEX 13T/16T SPLINED	1	Z06-D65-1316S
22	KEY 5/16" x 5/16" x 32mm LONG	1	WD623-K32
23	CHAIN 3/4" PITCH X 62 PITCHES	1	Z09-AW-3
24	1/2" DIA STAR WASHER	1	Z10-01-121
25	LOCKING FLAT	1	WD623-060
26	CHAIN GUARD	1	WD60-CGC
27	M10 HEX HD SET x 70mm LONG	2	Z26-068B
28	10mm DIA FLAT WASHER	2	Z10-02-10
29	M10 HEX HD SET x 30mm LONG	2	Z26-062S
30.	CHAIN TENSIONER	1	WD60-CT

TANCO AUTOWRAP 300 MODEL 1994

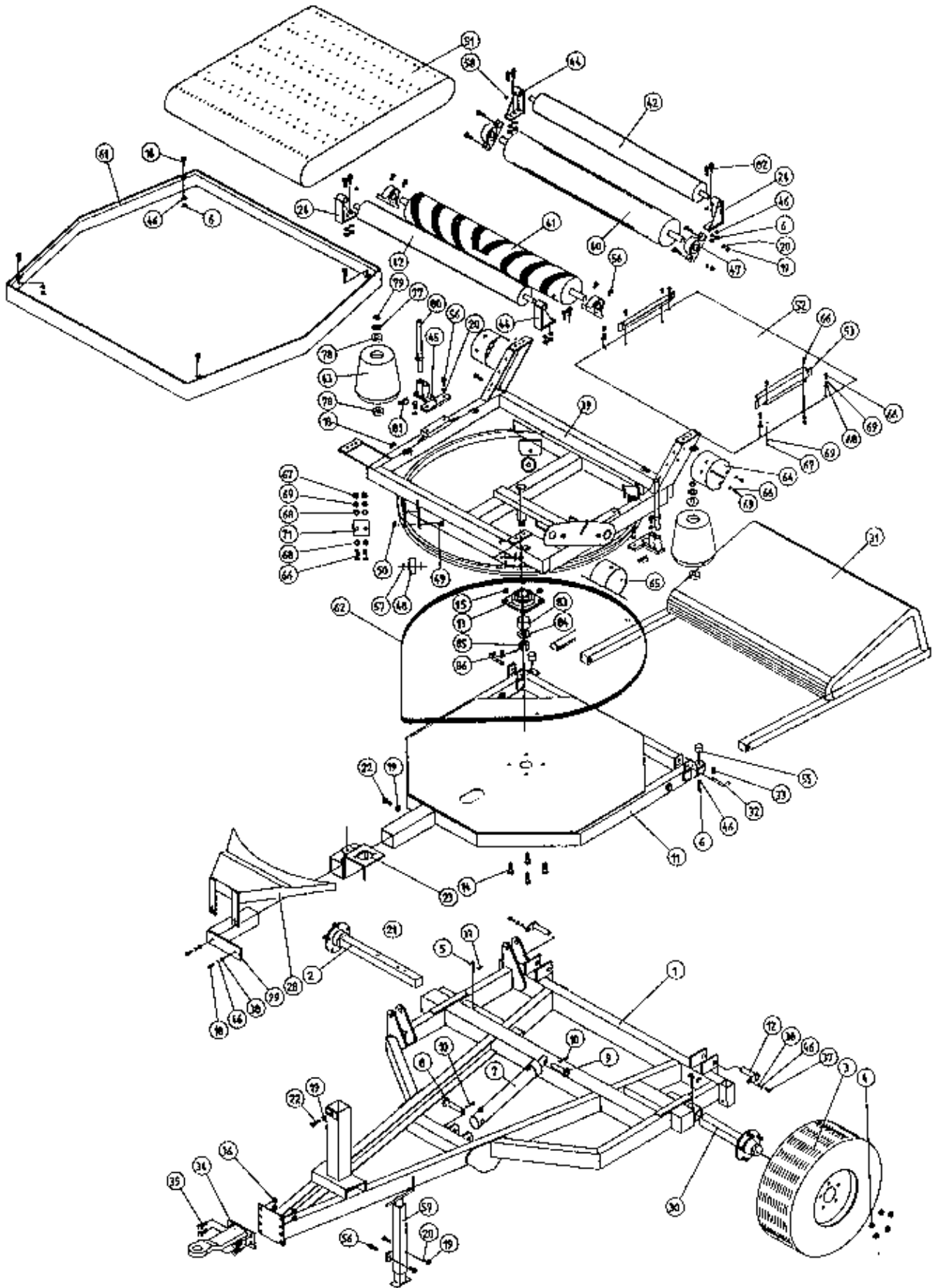


FILE NAME WD 60 PL 12

TANCO AUTOWRAP 300 MODEL (TRAILED) WD604PARTS LIST

ITEM NO.	DESCRIPTION	QTY	PART-NO.
1	CHASIS ASSY	1	WD60-CHA
2.	STUB AXLE (LONG)	1	Z04-033
3.	WHEELS	2	Z04-03
4	WHEELS NUTS	10	M22AWNA
5	BISSEL PIN	2	Z03-22-AW82
6	M10 HEX NUT	18	Z18-10
7	HYD. RAM	1	Z01-01-AR687
8	RAM BOTTOM PIVOT PIN	1	Z03-02-330
9	RAM TOP PIVOT PIN	1	Z03-03-50
10	2" X 1/4" SPLIT PIN	2	Z03-21-29
11	TIPPING FRAME ASSY	1	WD60-TFC
12	TIPPING FRAME PIVOT PIN C/W GREASE NIPPLE	2	Z03-01-905
13	2" DIA FLANGE BEARING C/W CAM LOCK COLLAR	1	Z06-49EC
14	5/8" UNF HEX HD SET X 2" LOG	4	Z31B-064
15	5/8" UNF LOCKNUTS	4	Z20-10
18	M10 HEX HD SET X 30MM LONG	10	Z26-062S
19	M12 HEX NUT	14	Z16-12
20	12MM DIA SPRING WASHER	12	Z12-02-12
22	M12 HEX HD SETS X 30MM LONG	1	Z26-082S
23	HYD MOTOR MOUNTING ASY	1	WD60-HMB
24	ROLLER MOUNTING BRACKET	1	WD60-TRMBL
28	HYD MOTOR GUARD ASSY	1	WD60-HMG
29	HYDRAULIC MOTOR GUARD MOUNTING BRACKET	1	WD60-HAMB
30	STUB AXLE (SHORT)	1	Z04-032
31	BALE RAMP ASSY	1	WD60-BR
32	BISSEL PIN	2	Z03-22-AW100
33	4MM "R" CLIP	4	Z36-02
34	HITCH ASSY	1	WD60-HIT
35	M16 HEX HD SET X 45MM LONG	4	Z26-123S
36	M16 LOCKNUTS	4	Z23-16
37	M10 HEX HD SET X 25MM LONG	2	Z26-061S
38	10MM DIA MACHINED FLAT WASHER	4	Z11-02-10
39	TURN TABLE ASSY	1	WD60-TAC
40	BIG ROLLER ASSY IDLER	1	WD65-BRI
41	BIG ROLLER ASSY DRIVER	1	WD65-BRD
42	SMALL ROLLER ASSY	2	WD60-SMR
43	SIDE ROLLER	2	Z06-AWR
44	ROLLER MTG BRACKET	2	WD60-TRMR
45	END ROLLER MOUNTING BRACKET	2	WD60-ERM
46	10MM SPRING WASHERS	18	Z12-02-10
47	1 1/4" PILLOW BLOCK BEARING C/W CAM LOCK COLLAR	4	Z06-485
48	SUPPORT WHEELS (4" DIA)	4	Z06-466
49	AXLE ASSY C/W GREASE NIPPLE	4	Z03-22-AW/AX Z39-60
50	M20 LOCKNUTS	4	Z23-20
51	1 METER WIDE X 89 1/2" LONG X 1/4" FLAT BELT	1	Z05-02-AWV

TANCO AUTOWRAP 300 MODEL 1994



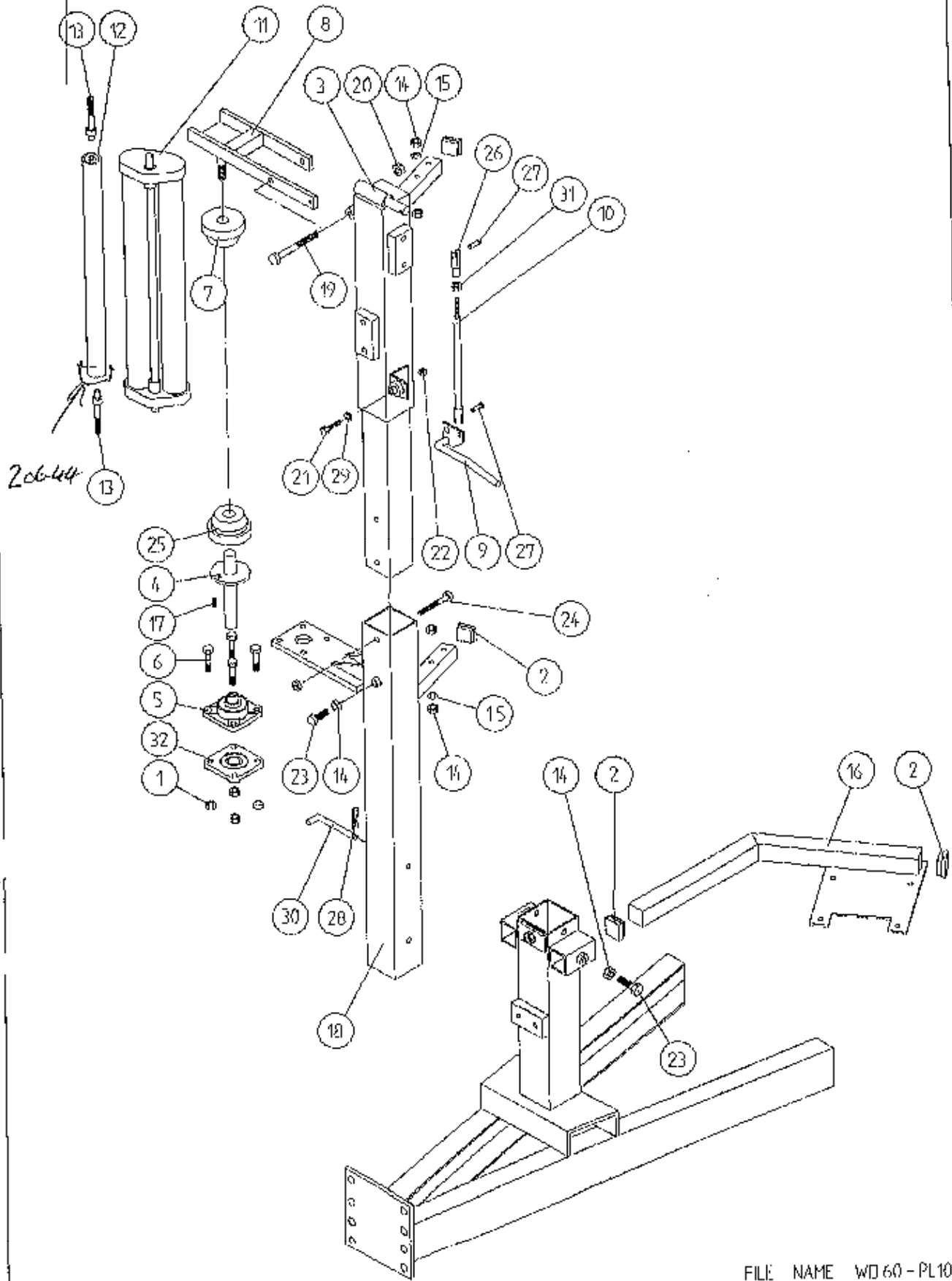
FILE NAME WD 60 PL 12

WD60-PL12

TANCO AUTOWRAP 300 MODEL (TRAILED) 1994
PARTS LIST

ITEM NO	DESCRIPTION	QTY	PART-NO.
52	TURN TABLE COVER PLATE	1	WD60-093
53	BELT GUIDE ASSY	2	WD625-BG
55	BUFFER 50MM DIA X 40MM LONG	2	Z40-20
56	M12 HEX HD SET X 40MM LONG	14	Z26-084S
57	SPACER	8	WD60-198
58	1/8" B.S.P. ST GREASE NIPPLE	4	Z39-60
59	SCREW JACK ASSEMBLY	1	WD60-JA
61	MAIN GUARD ASSY	1	WD60-MG
62	170" LONG X 1/2 PITCH X 1" WIDE TOOTHED BELT	1	Z05-02-AW20
64	GRASS GUARD (CLOSED TYPE)	3	Z49-98
65	GRASS GUARD (OPEN TYPE)	1	Z49-981
66	M8 HEX HD SETS X 20MM LONG	20	Z26-039S
67	M8 HEX NUTS	14	Z18-08
68	8MM DIA FLAT WASHERS (MUD FLAP)	20	Z11-02-081
69	8MM DIA SPRING WASHERS	20	Z12-02-08
71	SPACER	2	WD60-70S
77	THRUST WASHER	2	WD60-292
78	BEARING (25MM I.D.)	4	Z06-AWRB-93
79	CIRCLIP	2	Z28-525
80	ROLLER SHAFT ASSEMBLY	2	WD60-RSA
81	10MM "D" LINCH PINS	2	Z38-03
82	M10 HEX HD SET X 35MM LONG	8	Z26-063S
83	SPACER	1	WD63-1043
84	RETAINING COLLAR	1	WD60-770
85	1 1/4" UNC HEX NUT	1	Z18-300
86	M8 GRUB SCREW	2	Z28-006

TANCO AUTOWRAP 300 MODEL (TRAILED) 1984
 FILM DISPENSER SYSTEM



FILE NAME WD60-PL10

WD60-PL10

TANCO AUTOWRAP 300 MODEL (TRAILED) 1994

FILM DISPENSING SYSTEM

PARTS LIST

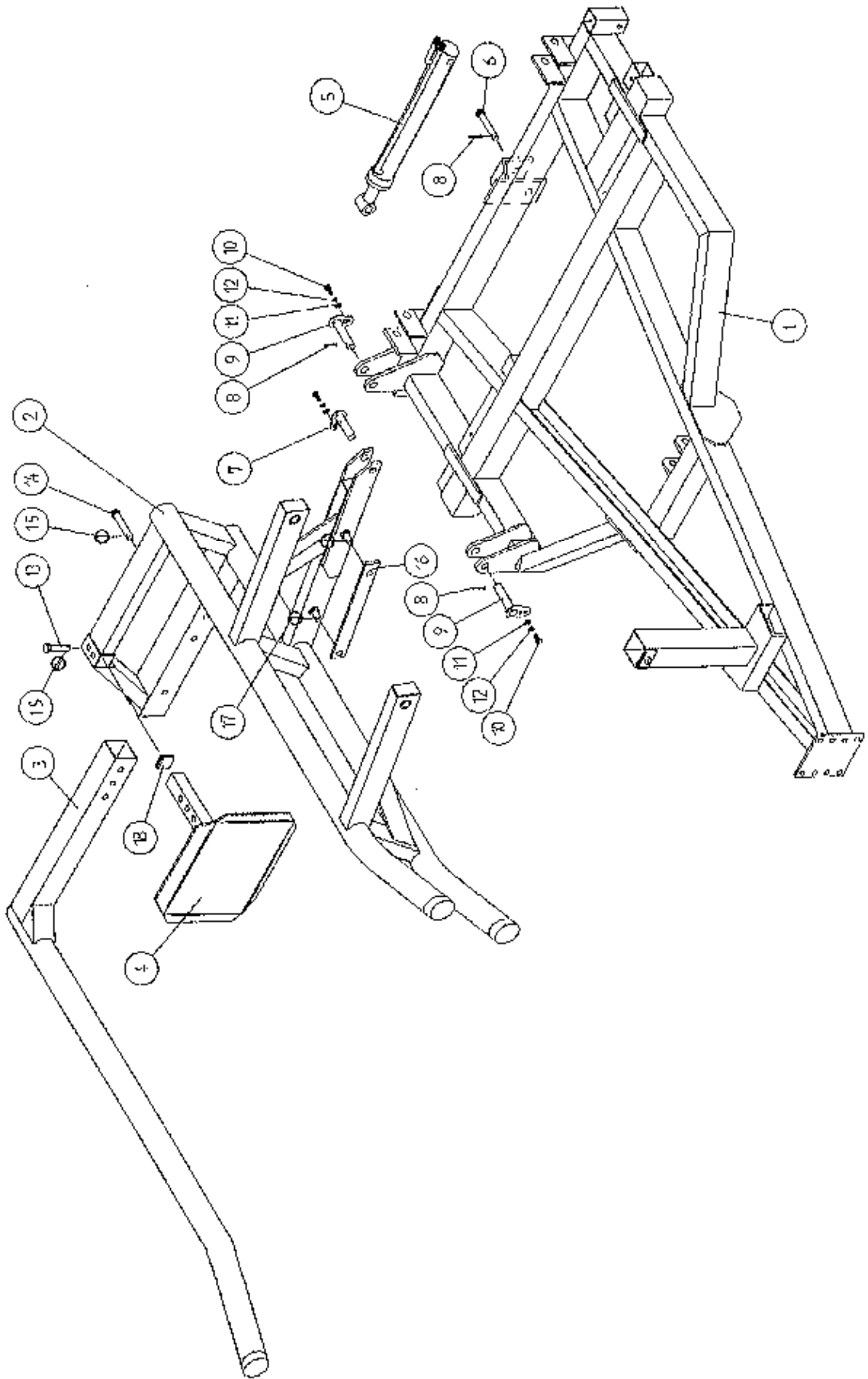
ITEM NO.	DESCRIPTION	QTY.	PART-NO
1	M10 LOCKNUTS	4	Z23-10
2	PLASTIC CAPS (TO SUIT 40 X 40 X 3 RHS)	4	Z32-07
3	DISPENSER MOUNTING (UPPER)	1	WD60-DMUH
4	FILM SPOOL ASSEMBLY	1	WD60-SPO
5	1" DIA FLANGE BEARING C/W CAM LOCK	1	Z06-48EC
6	M10 HEX HD. BOLT X 50MM LONG	4	Z26-066B
7	CONE (TOP) C/W BALL BEARINGS	1	Z06-45-01
8	CLAMP ASSEMBLY	1	WD60-DMCA
9	LEVER ASSEMBLY	1	WD60-DMLA
10	LINK ASSEMBLY	1	WD60-DMLK
11	FILM DISPENSER UNIT MK 6 (70% STRETCH)	1	D613
12	SLAVE ROLLER ASSY (PLASTIC COATED)	1	WD60-SLR
13	SLAVE ROLLER PIVOT	2	WD60-253
14	M12 HEX NUTS	6	Z18-12
15	12MM DIA SPRING WASHER	2	Z12-02-12
16	VALVE MOUNTING PLATE ASSEMBLY	1	WD65-VM3
17	1/4" DIA TENSION PIN X 3/4" LONG	1	Z03-20-062
18	DISPENSER MOUNTING (LOWER)	1	WD60-DMLH
19	M12 HEX HD BOLT X 130MM LONG	1	Z26-094B
20	M12 LOCKNUT	3	Z23-12
21	M8 HEX HD BOLT X 35MM LONG	1	Z26-042S
22	M8 LOCKNUT	1	Z23-08
23	M12 HEX HD SET X 30MM LONG	2	Z26-082S
24	M12 HEX HD BOLT X 100MM LONG	1	Z26-092B
25	CONE (BOTTOM)	1	Z06-45-02
26	CLEVIS (M10)	1	Z49-335
27	PIN (5/16" DIA) C/W CLIP	2	Z49-337
28	4MM "R" CLIP	1	Z36-02
29	8MM DUA MUD FLAP WASHER	1	Z11-02-081
30	BISSEL PIN X 110MM LONG	1	WD60-874
31	5/16" UNF HEX NUT	1	Z15-05
32	1" DIA FLANGE BEARING	1	Z06-48

BEARING ASSEMBLY

2

Z06-44

TANCO AUTOWRAP 300 MODELS
LIFT ARM ASSEMBLY



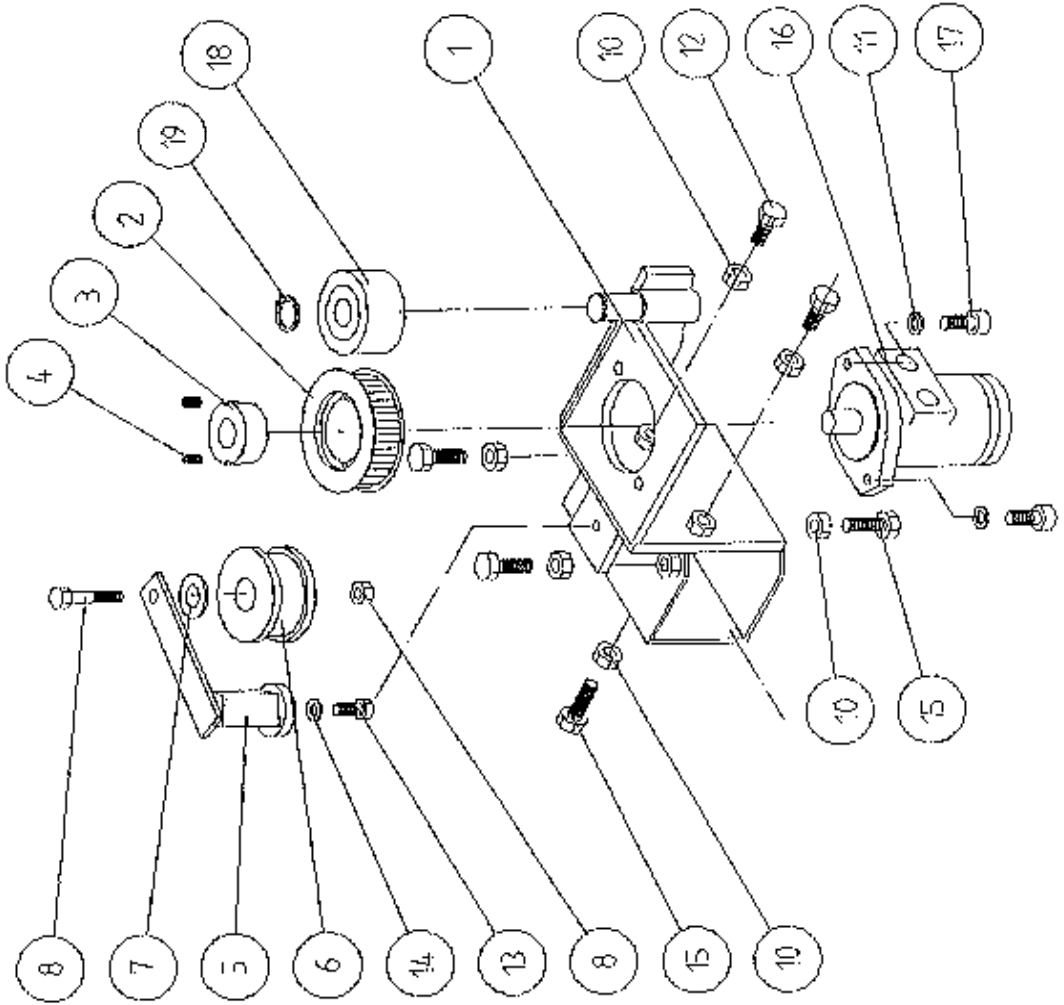
WD60-LA2

TANCO AUTOWRAP 300 MODEL (TRAILED) 1994
PARTS LIST

LIFT ARM AND CHASSIS

ITEM NO.	DESCRIPTION	QTY.	PART-NO.
1.	CHASSIS ASSEMBLY	1	WD60-CHA
2.	LIFT ARM ASSEMBLY	1	WD60-LA
3.	ADJUSTABLE OUTER ARM ASSY	1	WD60-LAAA
4.	ADJUSTABLE BALE STOP	1	WD610-LAS
5.	HYDRAULIC RAM (LIFT ARM)	1	Z01-01-AW
6.	RAM BOTTOM PIVOT PIN	1	Z03-02-330
7.	RAM TOP PIVOT PIN	1	Z03-01-797
8.	2" x 1/4" SPLIT PINS	3	Z03-21-29
9.	LIFT ARM PIVOT C/W GREASE NIPPLE	2	Z03-01-905
10.	M10 HEX HD SET x 25mm LONG (TUFLOCK)	3	Z26-061S
11.	10mm DIA MACHINED FLAT WASHER	3	Z11-02-10
12.	10mm DIA SPRING WASHER	3	Z12-02-10
13.	SPAREX PIN	1	Z03-04-73
14.	SPAREX PIN	1	Z03-04-77
15.	7/16" DIA LINCH PINS	2	Z03-22-06
16.	SAFETY SUPPORT BAR	1	WD60-319
17.	6mm DIA LINCH PIN	2	Z03-22-03
18.	PLASTIC CAP	1	Z32-10

TANCO AUTOWRAP 1994 MODEL
HYDRAULIC MOTOR DRIVE ASSEMBLY



WD60-PL27

TANCO AUTOWRAP 1994 MODEL
HYDRAULIC MOTOR DRIVE ASSEMBLY

PARTS LIST

ITEM NO.	DESCRIPTION	QTY.	PART-NO.
1.	HYDRAULIC MOTOR MOUNTING ASSY.	1	WD65-HMB
2.	4" DIA X 1/2" PITCH TOOTHED PULLY	1	Z09-005-AW1
3.	TAPER LOCK BUSH TO SUIT 1" DIA SHAFT	1	Z09-005-AW2
4.	M10 STUDS X 15MM	2	Z28-01
5.	ROSTA TENSIONING UNIT ARM	1	Z06-454
6.	STEPPED ROLLER C/W BEARINGS	1	Z06-456
7.	SPACER	1	WD60-798
8.	M10 HEX HD BOLT X 60MM LONG	1	Z26-067B
9.	M10 LOCKNUT	1	Z23-10
10.	M12 HEX NUT	6	Z18-12
11.	12MM DIA SPRING WASHER	2	Z12-02-12
12.	M12 HEX HD SET X 30MM LONG	2	Z26-082S
13.	M10 HEX HD SET X 25MM LONG (TUFLOCK)	1	Z26-061S
14.	10MM DIA SPRING WASHER	1	Z12-02-10
15.	M12 HEX HD SET X 40MM LONG	6	Z26-084S
16.	HYDRAULIC MOTOR C.L.	1	Z01-02-AR75
17.	M12 SOCKET HD SCREW X 30MM LONG	2	Z13-6-12X30
18.	ROLLER C/W BEARINGS	1	Z06-457
19.	CIRCLIP	1	Z28-525